

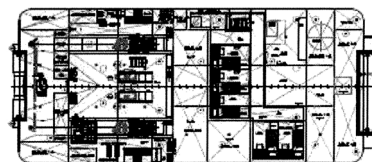
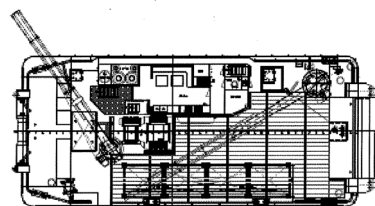
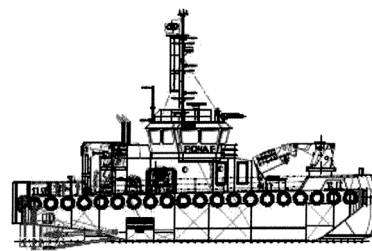


Mena C

Eurocarrier 2611

A strong, safe, stable and versatile working platform, easily able to work to her 150 mile MCA range, the Mena C can carry out a huge range of marine construction tasks. Her modern design and construction make her an economical operational tool. A high level of equipment specification ensures that her allotted tasks are carried out quickly and efficiently.

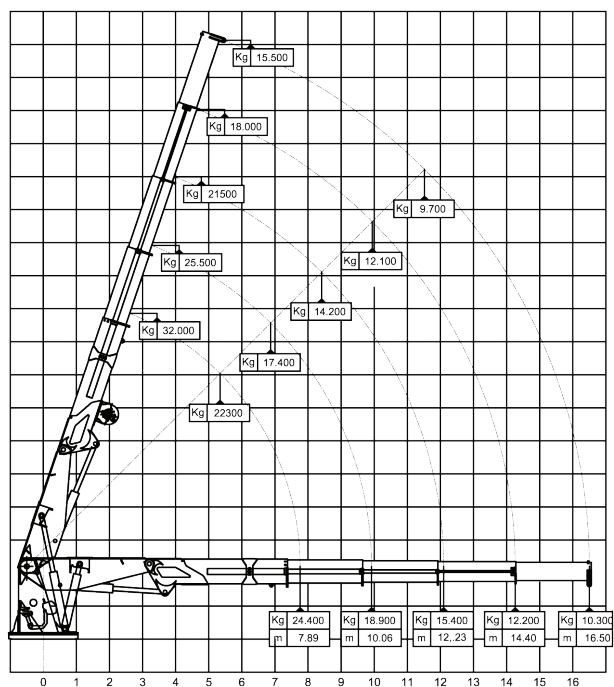
Deck Layout



Specifications

Boat Name	Mena C of Rhu
Port of Registry	Greenock
Type or Description	Eurocarrier 2611
IMO Number	9636125
Official Number	23219Z2011
Call Sign	2FDG5
MMSI Number	235090339
Build Date	December 2011
LOA	26.48 metre
Beam	11 metre
Draft	2.8 metre (tanks 98% full)
Deck Space/Area	125 metres ²
Deck Load	6 tonne per sq metre
Class	MCA Cat 1 150 miles from safe haven Bureau Veritas 1 + hull & machinery unlimited
Propulsion	2 Caterpillar C32 power 780bhp each
Bow Thruster	250hp electric
Cooling	Keel cooled
Speed	10 knots
Bollard Pull	33 tonne
Auxiliary Engines	
Generator(s)	2 Caterpillar C9 250Kva
Deck Equipment	Cranes 2 Fwd Heila 230 – 4SL 25 t @ 7 metre 10.5 t @ 16.31 metre Aft Heila 140 – 3S 26 t @ 5.67 metre 10 t @ 12.17 metre Winch(s) 1 x 80 tonne 1 x 50 tonne 1 x 15 tonne tugger
Store/Workshop Area	Yes
Fuel Capacity	100 metre ³ transferrable & metered
Water Capacity	60 metre ³ transferrable & metered
Navigation Equipment	Magnetic compass Electronic compass Radar (D)GPS Electronic chart plotter Echo sounder Watch keeper alarm AIS Navtex Talkback unit Speed log
Comms Equipment	Cell (GSM) phone Satellite phone MF/HF radio 2 x VHF radio Email
Other Equipment	Bow roller Stern roller Double push bow Towing hook/bit Hydraulic towing pins Hydraulic shark jaws Deck flood lights
Accommodation	Licensed for 12 2 double & 3 single cabins Messing facilities Heated & air-conditioned

Crane Lifting Capacity (fwd)



Crane Lifting Capacity (aft)

