

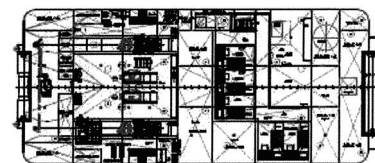
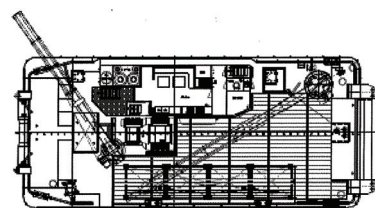
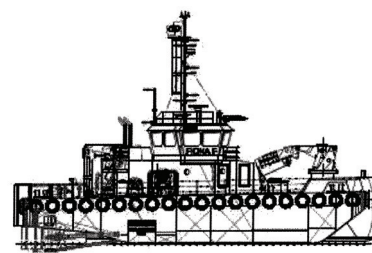


## Martine P

Eurocarrier 2611

The Martine P has quickly proved her suitability for a variety of marine projects. Dredge support, cable laying, anchor handling, barge support, wind farm operations and port and harbour construction operations are all easily within her capabilities. Her modern design and specification makes her an efficient, economic vessel providing excellent accommodation and welfare facilities for her operatives.

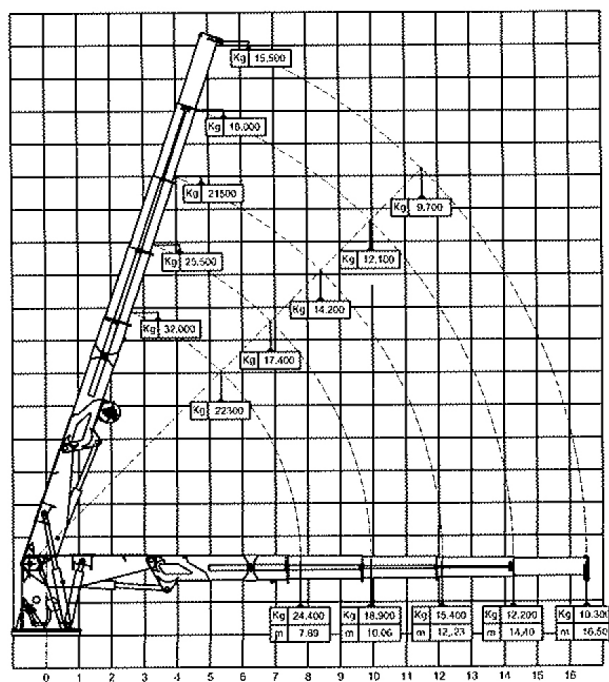
### Deck Layout



## Specifications

<b>Boat Name</b>	Martine P
<b>Port of Registry</b>	Greenock
<b>Type or Description</b>	Eurocarrier 2611
<b>IMO Number</b>	9640762
<b>Official Number</b>	23282Z2012
<b>Call Sign</b>	2FIL4
<b>MMSI Number</b>	235091541
<b>Build Date</b>	April 2012
<b>LOA</b>	26.48 metre
<b>Beam</b>	11 metre
<b>Draft</b>	Forward 2.8 metre (tanks 98% full)
<b>Deck Space/Area</b>	125 metres <sup>2</sup>
<b>Deck Load</b>	6 tonne per sq metre
<b>Class</b>	MCA Cat 1 150 miles from safe haven. Bureau Veritas 1 + hull & machinery
<b>Propulsion</b>	2 Caterpillar C32, Power 1560hp each
<b>Bow Thruster</b>	250hp, 360 degree
<b>Cooling</b>	Keel cooled
<b>Speed</b>	10 knots
<b>Bollard Pull</b>	33 tonne
<b>Auxiliary Engines</b>	
<b>Generator(s)</b>	2 Caterpillar C9 400 Volt 250 Kva
<b>Deck Equipment</b>	Cranes 2 Fwd / Heila 230-4SL 25 t @ 7 metre 10.5 t @ 16.31 metre Aft / Heila 140-3SL 26 t @ 5.67 metre 10 t @ 12.17 metre Winches 1 x 100 tonne 1 x 50 tonne 1 x 15 tonne tugger
<b>Store/Workshop Area</b>	
<b>Fuel Capacity</b>	100 metre <sup>3</sup> transferrable & metered
<b>Water Capacity</b>	60 metre <sup>3</sup> transferrable & metered
<b>Navigation Equipment</b>	Magnetic compass Electronic compass Radar (D)GPS Electronic chart plotter Echo sounder Watch keeper alarm AIS Navtex Talkback unit Speed log
<b>Comms Equipment</b>	Cell (GSM) phone Satellite phone MF/HF radio 2 x VHF radio Email
<b>Other Equipment</b>	Bow roller Stern roller Double push bow Towing hook/bit Hydraulic towing pins Hydraulic shark jaws Deck flood lights
<b>Accommodation</b>	Number of persons 12, Number of cabins 3 single & 2 double Messing facilities Heated & air-conditioned

## Crane Lifting Capacity (fwd)



## Crane Lifting Capacity (aft)

